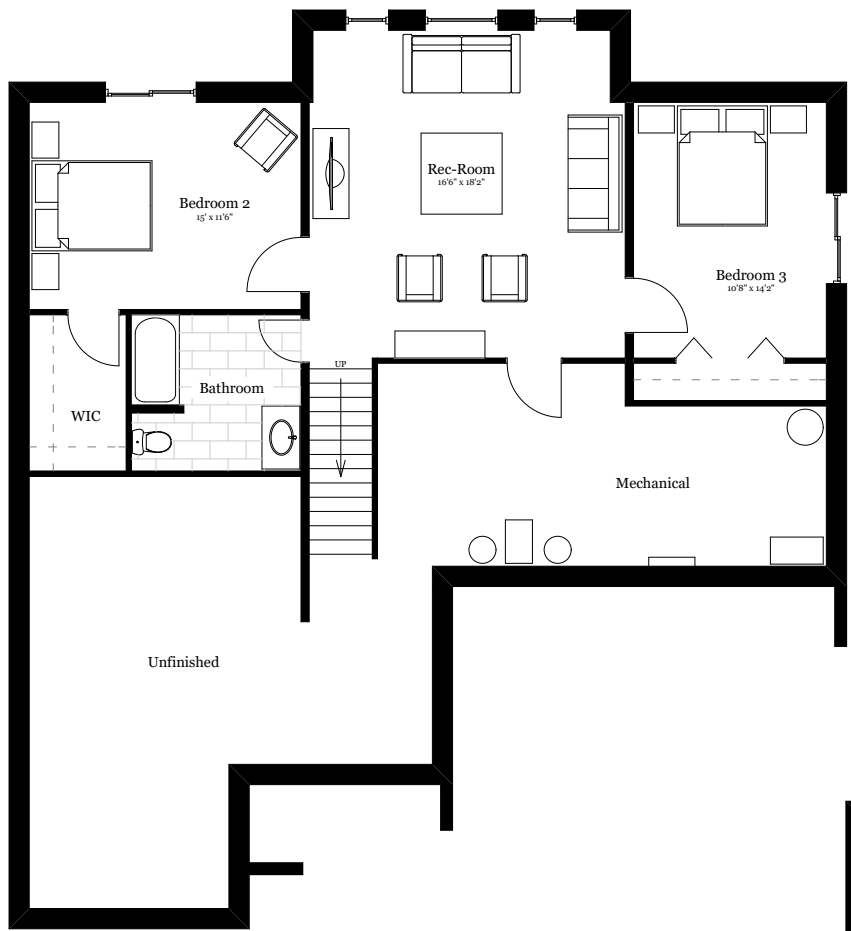


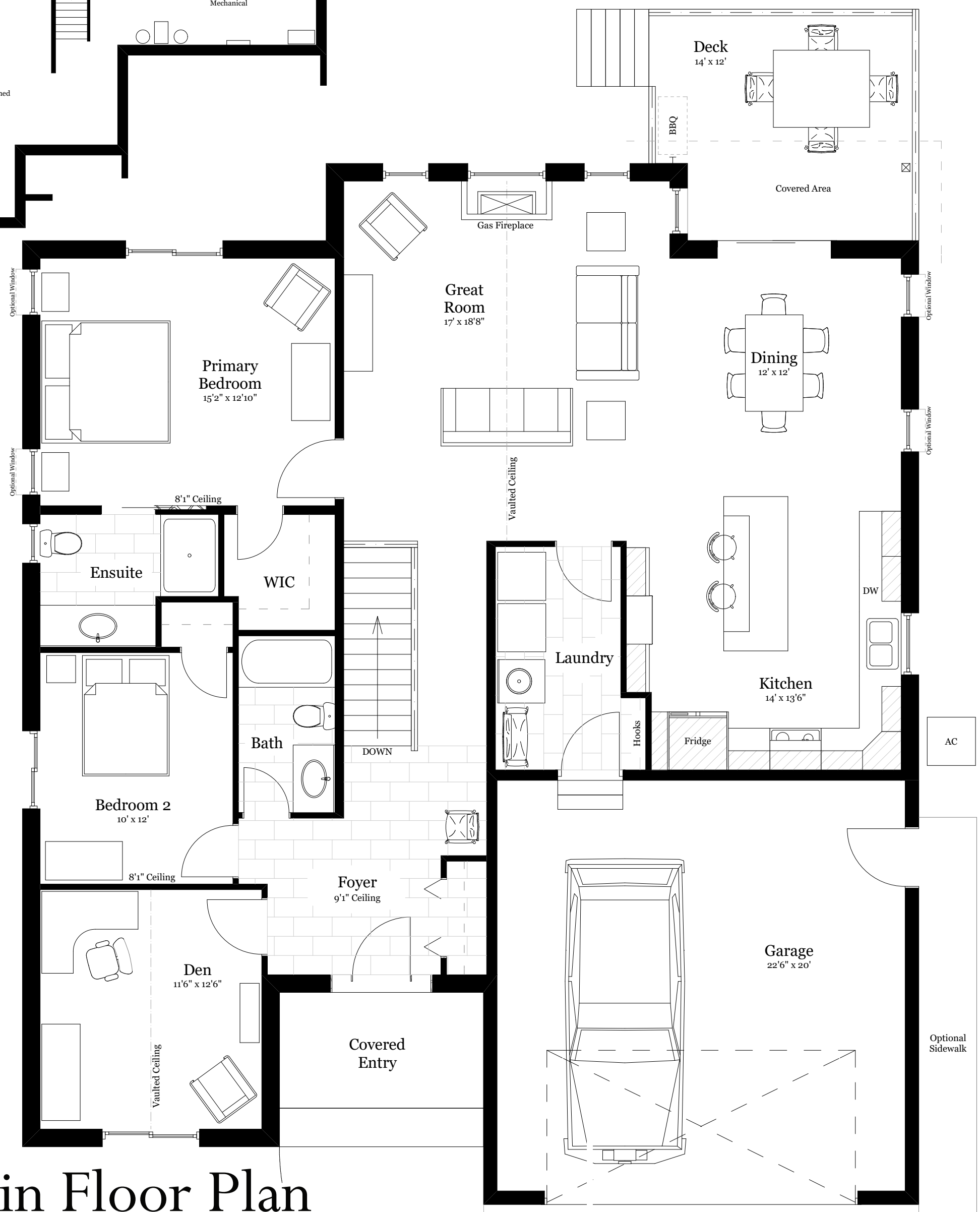
*Shown with optional 24' Wide Garage (Requires 60' Wide Lot)  
& optional 3 Panel Patio Door*

# The Northern Oak

Full Basement  
1755 sqft



Optional Finished Basement Area  
975 sqft



**Main Floor Plan**  
Shown with Vaulted Ceiling - optional 8' / 9' flat available